

LCFR SERIES RESIDENTIAL LIGHTING

LCFR-MCT5-WG

12" LARGE INTEGRATED LED DOME PENDANT LIGHTS WITH 6FT CORD

MCT5 Multi Color Temperature (Selectable)



AVAIL. FINISHES



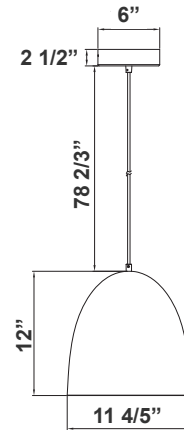
Pendant lights are stylish hanging light fixtures that double as task lighting. Perfect for kitchens, office or living areas, our vintage pendant lighting is available in 2 finishes that will look good in any home.

Customer Name: _____

Project Name: _____

Note: _____

Type: _____



93 1/5" x 11 4/5"(W)
Canopy Dimensions: 6" X 2-5/8"

Features

- Multi CCT (Selectable Switch under the lens)
- White/Gold Finish
- 5-Year Warranty
- Polycarbonate Lens

Technical Specifications

Electrical:

- Voltage: 120V AC 50/60Hz
- Wattage: 24W
- Power Factor: >0.90
- Efficacy: 34 LPW

Mechanical:

- White/Gold Finish
- Spun Steel Housing
- Polycarbonate Lens
- Power Cord is 60" Long
- Maximum Ambient Temperature: -22°F to 104°F
- IP55 Suitable for Damp Location
- 5-Year Warranty

Lighting:

- Multi CCT (Selectable Switch under the lens)
- Dimming: TRIAC Dimming (Dimmable Down to 5% Compatible with Traic and ELV Dimmers)
- Total Lumens: 820LM
- Color Temperatures: 2700K/3000K/3500K/4000K/5000K
- Color Rendering Index: CRI ≥ 90
- Beam Angle: 120°
- Rated life: 50,000 Hrs

Applications:

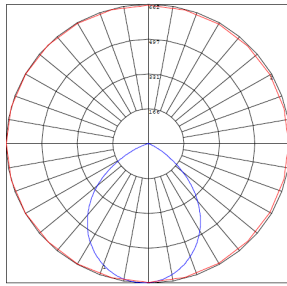
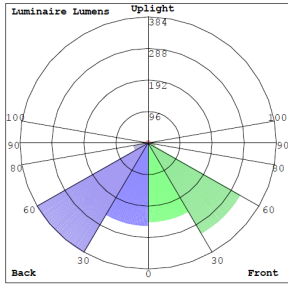
- Pendant lights are stylish hanging light fixtures that double as task lighting. Perfect for kitchens, office or living areas, our vintage pendant lighting is available in 2 finishes that will look good in any home.

Other Models:

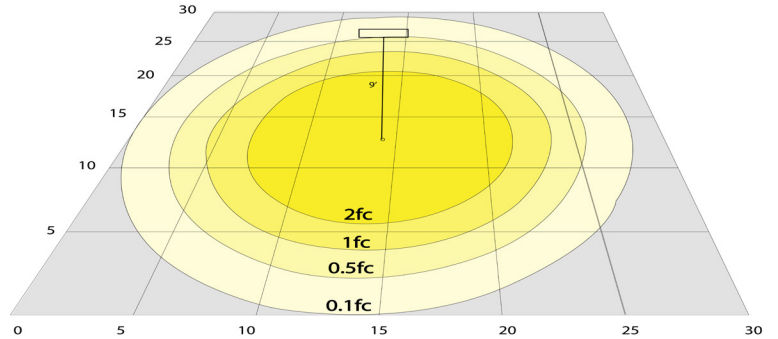
- 24W | 820LM | LCFR-MCT5-BG



Photometrics: LCFR-MCT5-WG



BUG Rating: B1-U1-G0



Area 30'x 30' Mounting Height: 9'

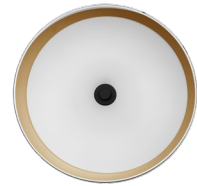
Other Views:



Side View



Front View



Lens View

Performance Table: LCFR-MCT5-WG

MODEL NO.	Wattage	Voltage	Lumens	Color Temp.	BUG Rating	LPW
LCFR-MCT5-WG	24W	120V	820LM	2700K/ 3000K/ 3500K/ 4000K/ 5000K	B1-U1-G0	34

Sample Ordering

Model	Power	Finish
LCFR	MCT5	WG

Other Model:

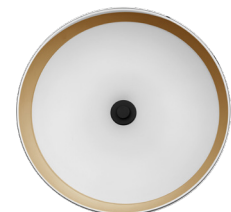
LCFR-MCT5-BG



Side View



Front View



Lens View

