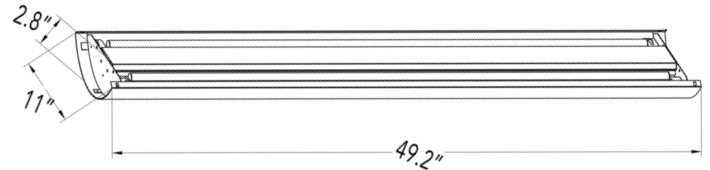


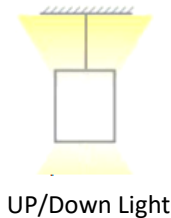


## DIMENSIONS:

49.2"(L) x 11"(W) x 2.8"(H)



- SCLP-UD-4FT-60W-50K-D
- SCLP-UD-4FT-60W-40K-D
- SCLP-UD-4FT-60W-35K-D
- SCLP-UD-4FT-60W-MCT-D



UP/Down Light

## LED ARCHITECTURAL PARABOLIC SUSPENDED LIGHTS (UP/DOWN)

Ideal for hotel, offices, retail outlets, restaurant, parking garages, storage room, conference room, education facilities and more.

### ELECTRICAL SPECIFICATIONS:

- Voltage: 120-277VAC 50/60Hz
- Wattage: UP/DOWN: 40W/20W
- Power factor: >0.95
- Efficacy: UP/DOWN: 110LM/W/105LM/W

### HOUSING SPECIFICATIONS:

- Anodized Aluminum
- Operating temperature: -13°F ~ 104°F
- Lifespan: 50,000 hrs.
- IP rating: IP20

### CERTIFICATIONS: UL



| MODEL                 | WATTS UP/DOWN | VOLTAGE    | LUMENS UP/DOWN | COLOR TEMP |
|-----------------------|---------------|------------|----------------|------------|
| SCLP-UD-4FT-60W-50K-D | 40W/20W       | 120~277VAC | 4,400LM/2100LM | 5000K      |
| SCLP-UD-4FT-60W-40K-D | 40W/20W       | 120~277VAC | 4,400LM/2100LM | 4000K      |
| SCLP-UD-4FT-60W-35K-D | 40W/20W       | 120~277VAC | 4,400LM/2100LM | 3500K      |
| SCLP-UD-4FT-60W-MCT-D | 40W/20W       | 120~277VAC | 4,400LM/2100LM | MCT        |

### OPTIONAL ACCESSORIES:



SCLP-UD-CB



SCL-6FT-SJTW18/5



SCL-CSY

| MODEL            | DESCRIPTION  |
|------------------|--|
| SCL-CSY          | Adjustable 6 Ft. Suspension Kit Select a Y-Connector Key Hole Set (Not Included) |
| SCL-6FT-SJTW18/5 | 6Ft. Cord SJTW 18 AWG 5-Conductor (Not Included)                                 |
| SCLP-UD-CB       | Coupling Bracket (Not Included)  |

### LIGHTING SPECIFICATIONS:

- Dimming: 0~10V dimmable
- Lens: Louver Lens
- Total lumens: UP/DOWN: 4400LM/2100LM
- Color temperature: 5000K/4000K/3500K  
MCT: 5000K/4000K/3500K
- Color rendering index: >80

### WARRANTY: 5 years

