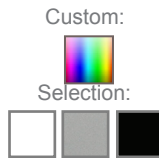
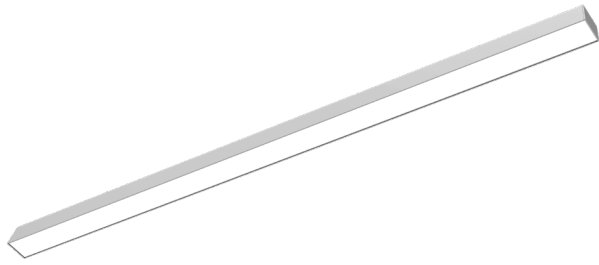
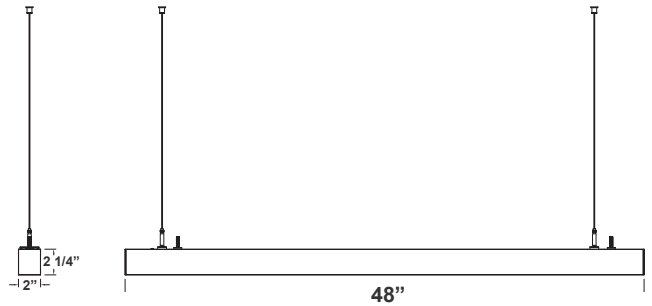


# SCE SERIES Commercial Lighting

SCE-4FT-40W-MCTP-D  
ADJUSTABLE BUILDER SERIES LINEAR LIGHT



Customer Name: \_\_\_\_\_  
Project Name: \_\_\_\_\_  
Note: \_\_\_\_\_ | Type: \_\_\_\_\_



2"(D) x 48"(W) x 2 1/4"(H)

The SCE series offers the best and the most comprehensive selection for linear lighting. The various available lengths and widths allow the creation of the desired shape to elevate the areas aesthetics to a unique and modern look while providing an impressive illumination for the occupants. Ideal for, retail locations, offices, lobbies, conference rooms, reception areas, hallways, educational facilities, hotels, and restaurants. FEATURES: Superior Architectural Look Energy-efficient: Low Wattage Consumption & High Lumen Output Easier Wire Management & Install Variety of Mounting Options Multi Color Temperature (Selectable Switch Inside Fixture) Variety Of Factory Customizations Available

## Features

- Opal Polycarbonate Lens-Direct (DOWN) Lighting
- 5-Year Warranty
- 50,000 Hours Rated Life
- Lens Type: Opal Polycarbonate Lens

## Technical Specifications

### Electrical:

- Voltage: 120-277VAC 50/60Hz
- Wattage: 30W/35W/40W
- Power Factor: >0.95
- LPW: 110LM/W

### Mechanical:

- Low Profile Modern Design
- Aluminum Housing With Matte White Finish
- Custom Colors Available
- Lens Snaps into Housing
- Make Different Connections Via T/L/X Joints on Both Ends
- Optional Suspension Cable Kits Available. Suspension Cables are not Included
- Mounting Options: Surface, Suspended
- IP Rating: IP54
- Operating Temperature: -13°F~104°F

### Lighting:

- Dimmable: 0~10V Dimming
- Total Lumens: 4400LM Max.
- Color Temperatures: 3500K/4000K/5000K
- Color Rendering Index: CRI ≥ 80
- Up Light Option Available
- Beam Angle: 104.8°(H) x 100.5°(V)

### Applications:

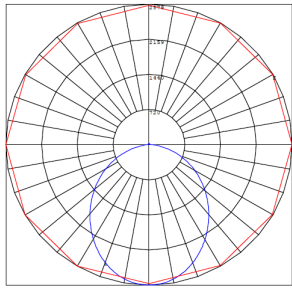
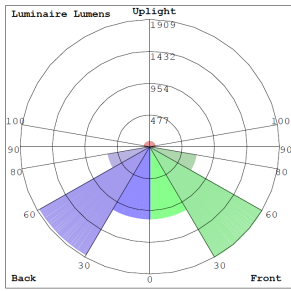
- Ideal for offices, hotels, corridors, saloons, libraries, meeting rooms, conference halls, and the best solution for modern lighting solutions
- It can be used in any indoor applications

### Other Models:

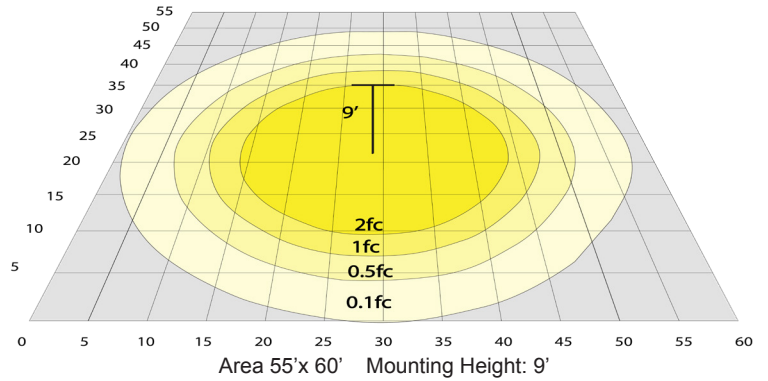
- 50W | 5500LM | SCE-6FT-50W-MCTP-D-SIL



## Photometrics: SCE-4FT-40W-MCTP-D-SIL



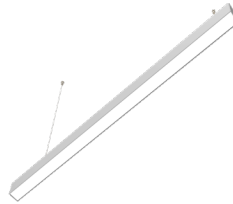
BUD Rating: B3-U3-G1



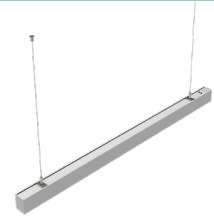
## Other Views:



Front View



Bottom View



Back View

## Performance Table: SCE-4FT-40W-MCTP-D-SIL

MODEL NO.	Wattage	Voltage	Lumens	Color Temp.	BUG Rating	LPW
SCE-4FT-40W-MCTP-D-SIL	30W	120~277V	3300LM	3500K	B3-U3-G1	110
	35W		3850LM	4000K		
	40W		4400LM	5000K		

## Sample Ordering

Model	Size	Wattage	Color Temp.	Feature	Color					
SCE	-	4FT	-	40W	-	MCTP	-	D	-	SIL

## Accessories:

Blank = No Option For Accessories  
**SCL-CS1-6FT** = ADJ. 6FT 1/16in SINGLE SUSPENSION CANOPY SET WITH KEYHOLE END CONNECTOR, NON-POWER SIDE  
**SCL-CS1P-6FT** = ADJ. 6FT 1/16in SINGLE SUSPENSION CANOPY SET WITH KEYHOLE END CONNECTOR, POWER SIDE WITH SJTW18/5 WHITE CORD  
**SCL-CS1P-6FT-NC** = ADJ. 6FT 1/16in SINGLE SUSPENSION CANOPY SET WITH KEYHOLE END CONNECTOR  
**SCL-GS10** = ADJ. 10FT 1/16in DOUBLE SUSPENSION CABLE WITH SINGLE KEYHOLE CONN., LOOP GRIPPER ON TOP  
**SCL-GS20** = ADJ. 20FT 1/16in DOUBLE SUSPENSION CABLE WITH SINGLE KEYHOLE CONN., LOOP GRIPPER ON TOP  
**SCL-6FT-SJTW18/5** = 6ft White Cord, SJTW 18 AWG 5-Conductor (Black, White, Green + Purple & Gray for 0-10V Dimming)  
**SCL-6FT-SJTW18/5-100FT** = 100ft Roll of White Cord, SJTW 18 AWG 5-Conductor (Black, White, Green + Purple & Gray for 0-10V Dimming)  
**SCL-6FT-SJTW18/5-100FT-BK** = 100ft Roll of Black Cord, SJTW 18 AWG 5-Conductor (Black, White, Green + Purple & Gray for 0-10V Dimming)  
**SCL-6FT-SJTW18/6-100FT** = 100ft Roll of Black Cord, SJTW 18 AWG 6-Conductor (Black, White, Green + Purple & Gray for 0-10V Dimming + Red for Backup Inverter)  
**SCL-AH** = Heavy-Duty Auxilliary Hook for Up To 1/16" Aircraft Cable  
**SCL-ASC-500FT** = 1/16" 500 ft. Steel Aircraft Cable Suspension  
**OPT-FWH-63/65/66** = This is a 6FT 3/5/6-Wire Whip option

\* More Mounting Options Refer to page 4

## Factory-Installed Options:

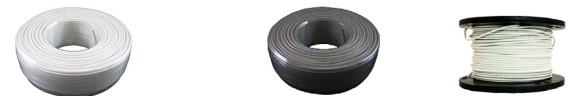
Blank = No Option For Accessories  
**OPT-HBC-125BS-WH** = 10FT, 15A, 125V, 18/3 STR, WHT

\* More Factory-Installed Options Refer to page 4

## SUSPENDED MOUNTING ACCESSORIES (NOT INCLUDED)



SCL-CS1-6FT SCL-CS1P-6FT SCL-CS1P-6FT-NC SCL-GS10 SCL-GS20



SCL-6FT-SJTW18/5-100FT SCL-6FT-SJTW18/5-100FT-BK SCL-ASC-500FT  
 SCL-6FT-SJTW18/6-100FT



SCL-AH SCL-ASC-500FT SCL-6FT-SJTW18/5

## FACTORY-INSTALLED OPTIONS:



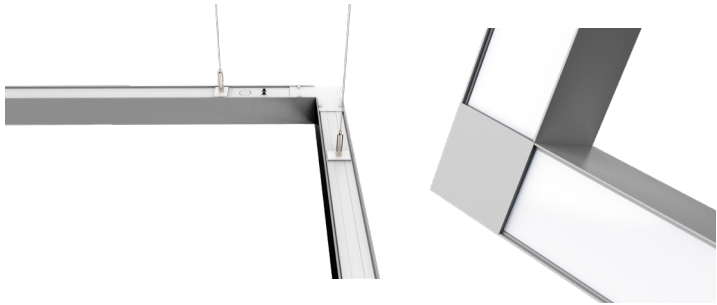
OPT-HBC-125BS-WH

## Example:

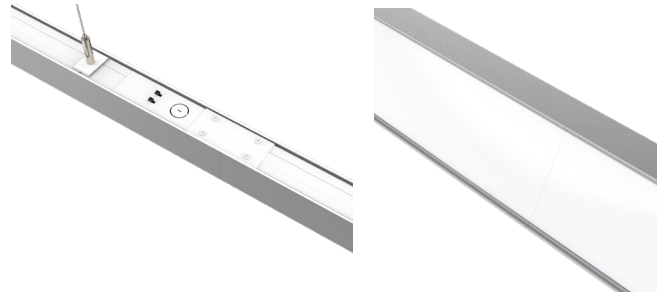
- SCE-4FT-40W-MCTP-D-SIL (For SCE 40W MCTP fixture 120-277V)
- SCE-4FT-40W-MCTP-D-SIL (For SCE 40W MCTP fixture 120-277V)  
 OPT-HBC-125BS-WH (10FT, 15A, 125V, 18/3 STR, WHT)



**MOUNTING AND LINKING OPTIONS:**



**L Linking Bracket  
SCE-LB-SIL**



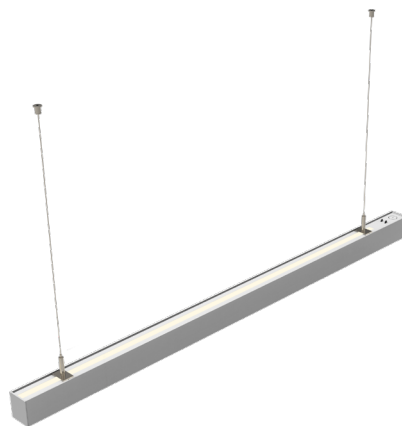
**Straight Linking Bracket  
SCE-SB-SIL**



**T Linking Bracket  
SCE-TB-SIL**



**X Linking Bracket  
SCE-XB-SIL**



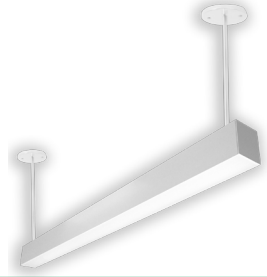
**Up-Light  
SCE-ULM-4FT-MCTP-D-SIL**



## MOUNTING OPTIONS:


### SUSPENSION ROD KITS (SET OF 2)



Model	SIZE
SCL-RS-12	12 IN
SCL-RS-18	18 IN
SCL-RS-24	24 IN
SCL-RS-36	36 IN
SCL-RS-48	48 IN



### LINKING Bracket


Model	DESCRIPTION
SCE-SB-SIL	SCE Series Straight Linking Bracket
SCE-TB-SIL	SCE Series T Linking Bracket
SCE-LB-SIL	SCE Series L Linking Bracket
SCE-XB-SIL	SCE Series X Linking Bracket



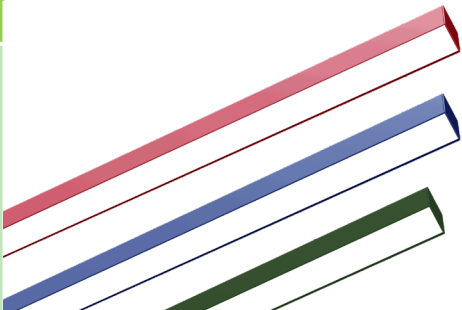
### INDIRECT (UP) LIGHTING

Model	SIZE	DESCRIPTION
SCE-ULM-4FT-MCTP-D-SIL	4FT	4Ft SCE Series Uplight Module 35/40/50K Transfers 30% Power To Top





## FACTORY-INSTALLED OPTIONS:

### COLOR OF YOUR CHOICE

Model	DESCRIPTION	
OPT-CLR-SCX-4FT	Add this option and specify your desired color on your purchase order or provide a swatch to match.	

### EMERGENCY BATTERY BACKUP

Model	DESCRIPTION	
OPT-EM-CM1INT	This is an option for a 90-minute backup battery installation. If you need to order this series for the fixture, please have your purchase order ready and call us or specify on the order which fixture to install this option and the test button.	



**COLOR CHART:** \* Choose from one of our Premium Colors with no set-up fee.

**Gloss:**



SILVER METALLIC  
70 GLOSS  
T357-GR105



SILVER METALLIC  
30 GLOSS  
T353-GR06



DARK RED 90  
GLOSS  
P009-RD02



INTERNATIONAL  
ORANGE 90  
GLOSS  
T009-OG26



SAFETY ORANGE  
90 GLOSS  
T009-OG01



YELLOW 90  
GLOSS  
T009-YL14



YELLOW 90  
GLOSS  
T009-YL01



TRAFFIC GREEN  
70 GLOSS  
T007-GN16



GREEN 70 GLOSS  
T007-GN13



GREEN 60 GLOSS  
C006-GN03



BLUE 90 GLOSS  
T009-BL01



DARK BLUE 80  
GLOSS  
T008-BL20



RAL 8028 TERRA  
BROWN 90 GLOSS  
C209-BR358

**Hammer:**



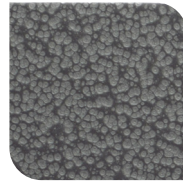
WHITE HAMMER  
T013-WH09



BEIGE HAMMER  
T013-BG38



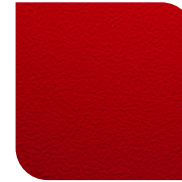
GREY HAMMER  
C013-GR08



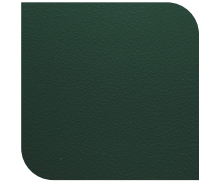
SILVER  
HAMMERTONE  
T064-GR05



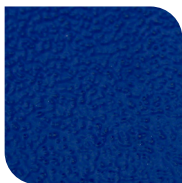
BLACK HAMMER  
T013-BK62



RED HAMMER  
T013-RD15



GREEN HAMMER  
T013-GN220



BLUE HAMMER  
T013-BL468



BRONZE HAMMER  
T012-BR161

**Texture:**



WHITE TEXTURE  
C031-WH120



FLINT GRAY  
TEXTURE  
T243-GR522



BLACK TEXTURE  
C241-BK109



RED TEXTURE  
T241-RD129



BLUE TEXTURE  
C241-BL544

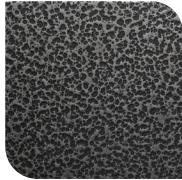


OIL RUBBED  
BRONZE TEXTURE  
T291-BR251

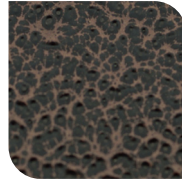
**Vein:**



BLACK/WHITE  
VEIN  
T075-WH34



SILVER VEIN  
T375-BK26



COPPER VEIN  
EXTERIOR  
T075-BK211



GOLD VEIN  
T375-BK10



COPPER VEIN  
T375-BK07