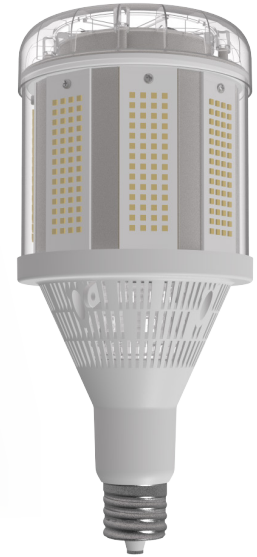


Direct



Application illustration only, subject lamps not used in photo.



1000W GE LED replacement lamps for HID-Ballast Bypass (Type B)

GE's LED replacement for HID lamps leverage the low energy and long life of LED. The existing fixture is wired to bypass the ballast, which reduces energy use and eliminates the need to check ballast compatibility. Additional maintenance savings are realized by removing costs associated with purchasing and installing ballasts.

LOW-COST OPERATION

- Uses 60% less energy, providing similar light output
- For example, an LED lamp using 450 watts, saves \$3,437 in energy costs over the rated life of the lamp vs. a standard 1,075 watt HID lamp system (1000W lamp and 75W ballast) based on \$0.11 per kWh
- Ballast bypass (Type B) wiring eliminates costs associated with replacing ballasts
- Total system >144 LPW

VERSATILE UPDATE

- Omni-directional lamp utilizes existing fixture optics
- Flexible use-one lamp can be used in many types of fixtures
 - Universal burn
 - Designed to match HID ANSI profile
- Rated for open and enclosed fixtures
- Temperature rating for -20°C to 50°C
- Exceeding temperature ratings will shorten life of lamp
- Type B eliminates the need to check ballast compatibility

LONG LIFE

- 2.5X Longer Life (50,000 hr LED vs 20,000 hr HID)
- 50,000 hour rated life (L70)
- High-Performance fan ensures rated lamp life

COLOR RENDERING

- Available with a CRI of 70

COLOR TEMPERATURE

- Available in 4000K and 5000K
- Instant On/Brightness

ENVIRONMENTALLY CONSCIOUS

- These lamps are energy efficient and are compliant with material restriction requirements of RoHS

GE QUALITY AND RELIABILITY

- 5-year limited warranty
- Tether, support kit, and in-line fuse included
- Robust construction with metal components
- Driver with internal fuse provides 6 kV surge protection

ecomaginationSM


To learn more about saving money and energy, go to: <http://products.currentbyge.com>.

Information provided is subject to change without notice. Please verify all details with GE. All values are design or typical values when measured under laboratory conditions, and GE makes no warranty or guarantee, expressed or implied, that such performance will be obtained under end-use conditions.

current
powered by GE



GE LED HID Type B Replacement Lamps

Bulb Shape	Base Type	Watts	Order Code	Description	Fixture Rating	Volts	Case Qty	MOL (In)	MOD (In)	Lumens Initial	Initial Color Temp	CRI	Wattage Replacement	*Rated Life L70 (Hrs)	Dimmable	DLC	^ #Location Rating	Additional Information
LED Replacement Lamps for HID																		
	EX39	270	93095547	LED270BT56/740	Open and Enclosed Rated	277-480	3	12.2	5.5	40,000	4000K	>70	1000W	50,000	-	Pending	Damp	Ballast bypass required.
			93095553	LED270BT56/750	Open and Enclosed Rated	277-480	3	12.2	5.5	40,000	5000K	>70	1000W	50,000	-	Pending	Damp	Ballast bypass required.
		450	93096445	LED450BT56/740	Open and Enclosed Rated	277-480	3	12.2	5.5	65,000	4000K	>70	1000W	50,000	-	Pending	Damp	Ballast bypass required.
			93096547	LED450BT56/750	Open and Enclosed Rated	277-480	3	12.2	5.5	65,000	5000K	>70	1000W	50,000	-	Pending	Damp	Ballast bypass required.

GE LED HID Type B Replacement Lamps - Support Kit Included



Energy Savings switching from HID to LED Type B

Lamp Replacement Wattage	HID System Wattage	LED System Wattage	System Energy Savings	System Energy Cost Savings Over Life of Lamp*
1000W	1075W	450W	625W	\$3,437
1000W	1075W	270W	805W	\$4,427

*Based on energy rates at .11kwh over the life of the lamp

Information provided is subject to change without notice. Please verify all details with GE. All values are design or typical values when measured under laboratory conditions, and GE makes no warranty or guarantee, expressed or implied, that such performance will be obtained under end-use conditions.

* The life rating is based on the hours of operation the lamp will provide before reaching 70% of its original rating (L70)

** Minimum order quantity = 1

UL 1993 Environmental Requirements for LED LAMPS

Location, damp - Exterior or interior location that is normally or periodically subject to condensation of moisture in, on, or adjacent to, electrical equipment, and includes partially protected locations.

Location, dry - Location not normally subject to dampness, may include a location subject to temporary dampness, i.e., building under construction, provided ventilation is adequate to prevent an accumulation of moisture.

Location, wet - Location in which water or other liquid can drip, splash, or flow on or against electrical equipment.

^ Not suitable for air-tight explosive or hazardous fixtures.

ecomaginationSM

current
powered by GE

<http://products.currentbyge.com>

GE and the GE Monogram are trademarks of the General Electric Company. All other trademarks are the property of their respective owners. Information provided is subject to change without notice. All values are design or typical values when measured under laboratory conditions. GE Lighting and GE Lighting Solutions, LLC are businesses of the General Electric Company. © 2018 GE.



LEDL065 (Rev 09/27/18)