

**CLASSIC DESIGN, NOW WITH
SUPERIOR LED EFFICIENCY**



HIGH LUMEN OUTPUT
110 LPW

DAMP LOCATION RATED

2KV SURGE PROTECTION

50,000 HOURS

5 YEAR WARRANTY

ENERGY STAR CERTIFIED

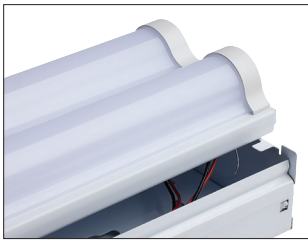


Our latest strip lights are the right choice in utility lighting when space is limited, but more light is needed. Their high lumen output, sleek yet rugged design, and ease of installation separate them from other strip lighting. They deliver the energy savings and low maintenance that comes with LED technology.



SATCO NUVO FUNCTIONAL

- High Lumen output
- Damp location rated
- 2KV surge protection
- 50,000 hours
- 5 Year warranty
- ENERGY STAR Certified



Easy Installation



86-211 PIR Sensor

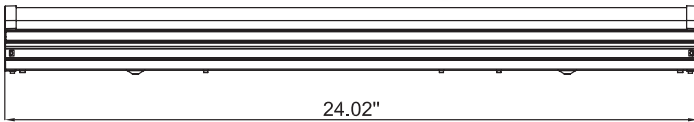


65-1070

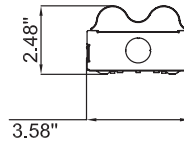


65-1071

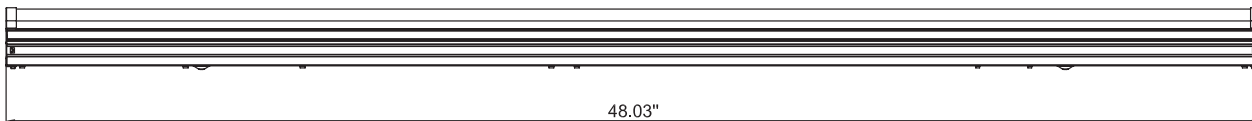
Both 2' & 4' sizes have (5) 1/2" knockouts. One on either end and three along the back including one in the center.



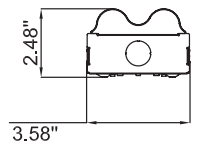
65-1070



3.58"



65-1071



3.58"



Item	Description	W	CCT	Lm	UPC	Pk
65-1070	2' LED DOUBLE LIGHT STRIP	20	4000K	2200	045923610707	12
65-1071	4' LED DOUBLE LIGHT STRIP	43	4000K	4750	045923625503	8
Accessory						
86-211	PIR SENSOR - WHITE				045923862113	20

SATCO DISTRIBUTION CENTERS

NEW YORK (HQ)
110 HEARTLAND BLVD
BRENTWOOD, NY 11717
T. 631-243-2022
F. 631-243-2027

TEXAS
2000 VALWOOD PKWY
FARMERS BRANCH, TX 75234
T. 972-247-2437
F. 972-247-5408

FLORIDA
900 NW 159TH DR
MIAMI, FL 33169
T. 305-624-2044
F. 305-623-0286

CALIFORNIA
31288 SAN BENITO ST
HAYWARD, CA 94544
T. 510-487-4822
F. 510-487-8955

WASHINGTON
4710 116TH ST SW
MUKILTEO, WA 98275
T. 425-789-3300
F. 425-789-3310

PUERTO RICO
CAMPECHE STREET, 23
JULIO N. MATOS INDUSTRIAL PARK
CAROLINA, PR 00984
T. 787-757-3510
F. 787-757-3540

Products inventoried in Canada & Mexico, contact: internationalsales@satco.com / 631-243-2022 Ext. 315